



# COLD WATER HIGH PRESSURE WASHER

- 22L / min Water Flow
- 22kW / 30 Hp Motor
- Compact Design
- 40 L Water Tank
- Sturdy Frame

## 500 BAR WATER JET



[ticomachine.com](http://ticomachine.com)





## SHIPYARDS AND MARINE INDUSTRY

Ideal for removing marine growth, rust, and old paint from hulls and underwater surfaces. It is especially effective during dry dock maintenance and waterline cleaning. Speeds up surface preparation and improves coating adhesion.



## CONSTRUCTION AND JOBSITE CLEANING

Perfect for cleaning concrete mixers, formworks, scaffolding and construction tools from cement and mortar residues. Also used for increasing surface adhesion by roughening concrete surfaces. Efficient in heavy debris removal and ground preparation.



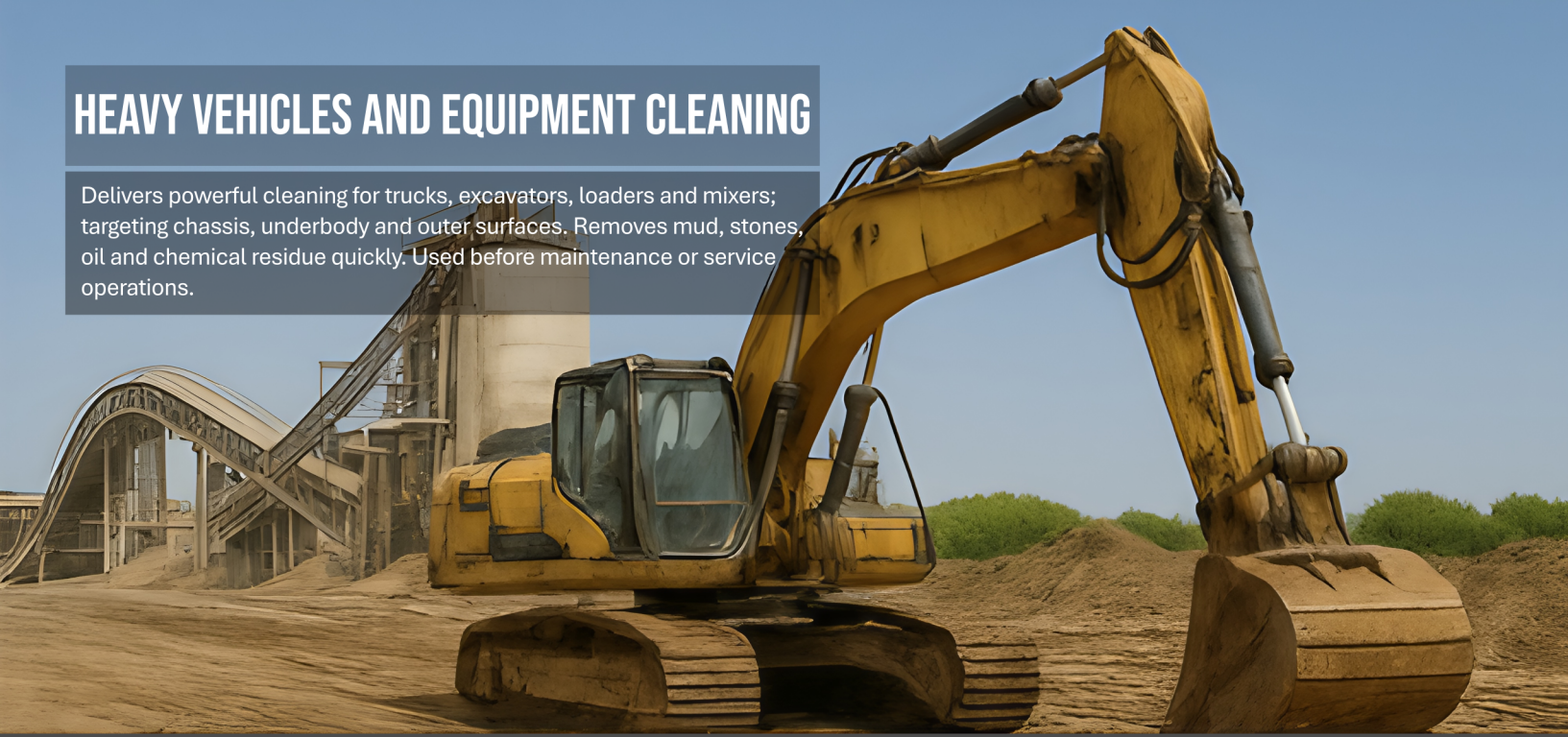
## OIL AND PETROCHEMICAL INDUSTRY

Used to clean tanks, piping systems and refinery floors from oil, sludge, and rust buildup. Its cold water operation makes it safe in flammable environments. Also effective in cleaning slippery surfaces on production platforms.



## HEAVY VEHICLES AND EQUIPMENT CLEANING

Delivers powerful cleaning for trucks, excavators, loaders and mixers; targeting chassis, underbody and outer surfaces. Removes mud, stones, oil and chemical residue quickly. Used before maintenance or service operations.



## INFRASTRUCTURE AND MUNICIPAL SERVICES

Performs excellently in cleaning tunnels, bridge columns, drainage covers and utility channels from dirt and debris. Effectively removes graffiti and street paint from pavements. Suitable for cleaning asphalt machinery and public works equipment.



## CEMENT AND MINING FACILITIES

Efficient in cleaning crushers, conveyors, and belt systems from accumulated dust, cement and heavy dirt. Increases equipment efficiency and reduces downtime. Built tough for reliable operation in challenging mining environments.





## USER-FRIENDLY DESIGN

The pressure adjustment valve and pressure gauge are positioned for easy access by the operator. This user-friendly design allows a single operator to quickly and safely adjust the machine pressure, maximizing efficiency and ease of use on the job site.



Spray Gun;

**tecomec**

Italy-made trigger gun with 500 Bar working pressure and 60 L / min water flow rate.



High-Pressure Pump;

**ANNOVI  
REVERBERI**  
The Power of Experience

Italy-made high-pressure pump with 500 bar and 22 L/min flow rate, operating at 1450 RPM.

Electric Motor;

IE3 efficiency class; 22 kW power, 1500 RPM, Three-phase, Heavy-duty industrial motor.

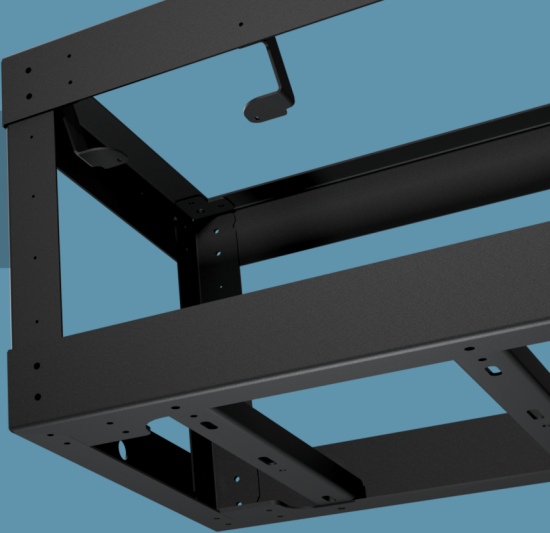
## VIBRATION ISOLATORS

Vibration isolators dampen the vibrations of the motor and pump, reducing noise levels and preventing vibrations from spreading to other machine components. This results in quieter operation and increased longevity.



# STURDY FRAME

The 4 mm thick, weld-free steel body provides superior protection against harsh conditions that may be encountered in the field. Manufactured using high-precision laser cutting, the powder-coated finish offers high durability against external factors.



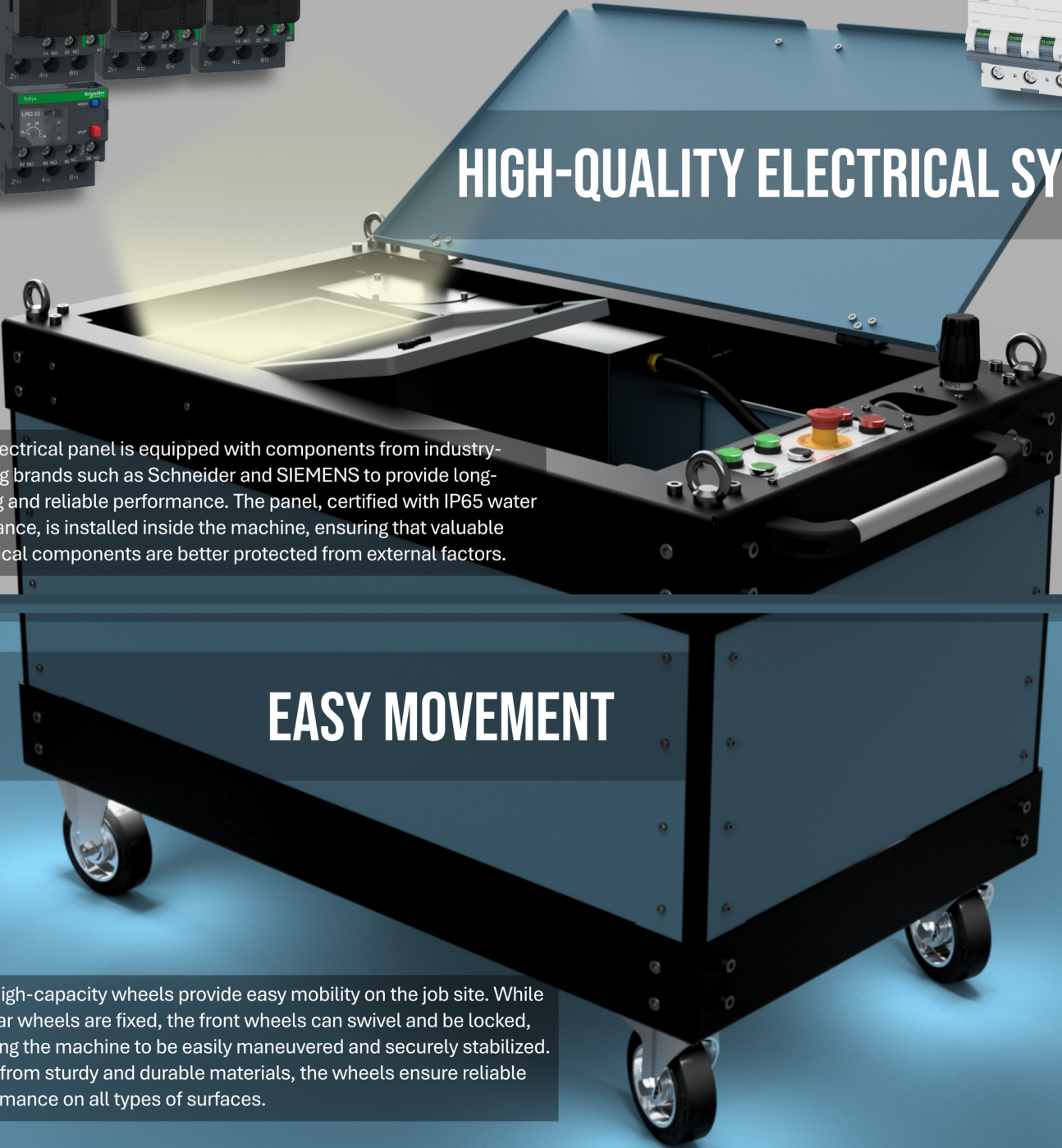
Schneider  
Electric

SIEMENS



# HIGH-QUALITY ELECTRICAL SYSTEM

The electrical panel is equipped with components from industry-leading brands such as Schneider and SIEMENS to provide long-lasting and reliable performance. The panel, certified with IP65 water resistance, is installed inside the machine, ensuring that valuable electrical components are better protected from external factors.



# EASY MOVEMENT

Four high-capacity wheels provide easy mobility on the job site. While the rear wheels are fixed, the front wheels can swivel and be locked, allowing the machine to be easily maneuvered and securely stabilized. Made from sturdy and durable materials, the wheels ensure reliable performance on all types of surfaces.



# EASY AND RELIABLE CONTROL

The control panel allows for easy management of all the machine's functions. Possible faults are detected through indicator lights, ensuring the safe operation of the machine.



With the external panel, the operator controls the machine through a low-voltage panel, protecting themselves from the high voltage risks of the internal electrical panel.

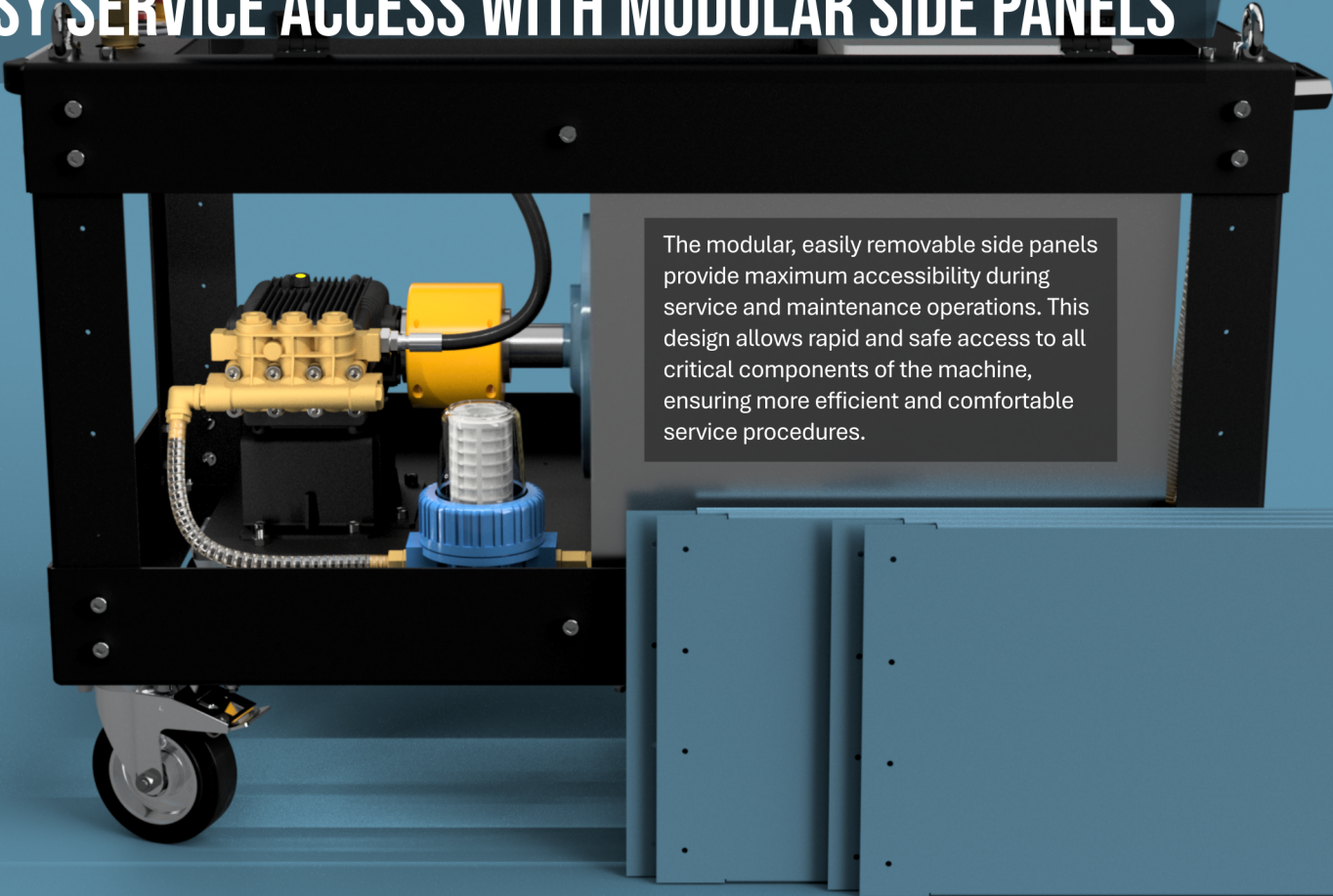
# 40-LITER WATER TANK

The water tank provides continuous washing capability and allows the system to stop the machine automatically when the water runs out, preventing the pump from running dry. This ensures long-lasting performance.



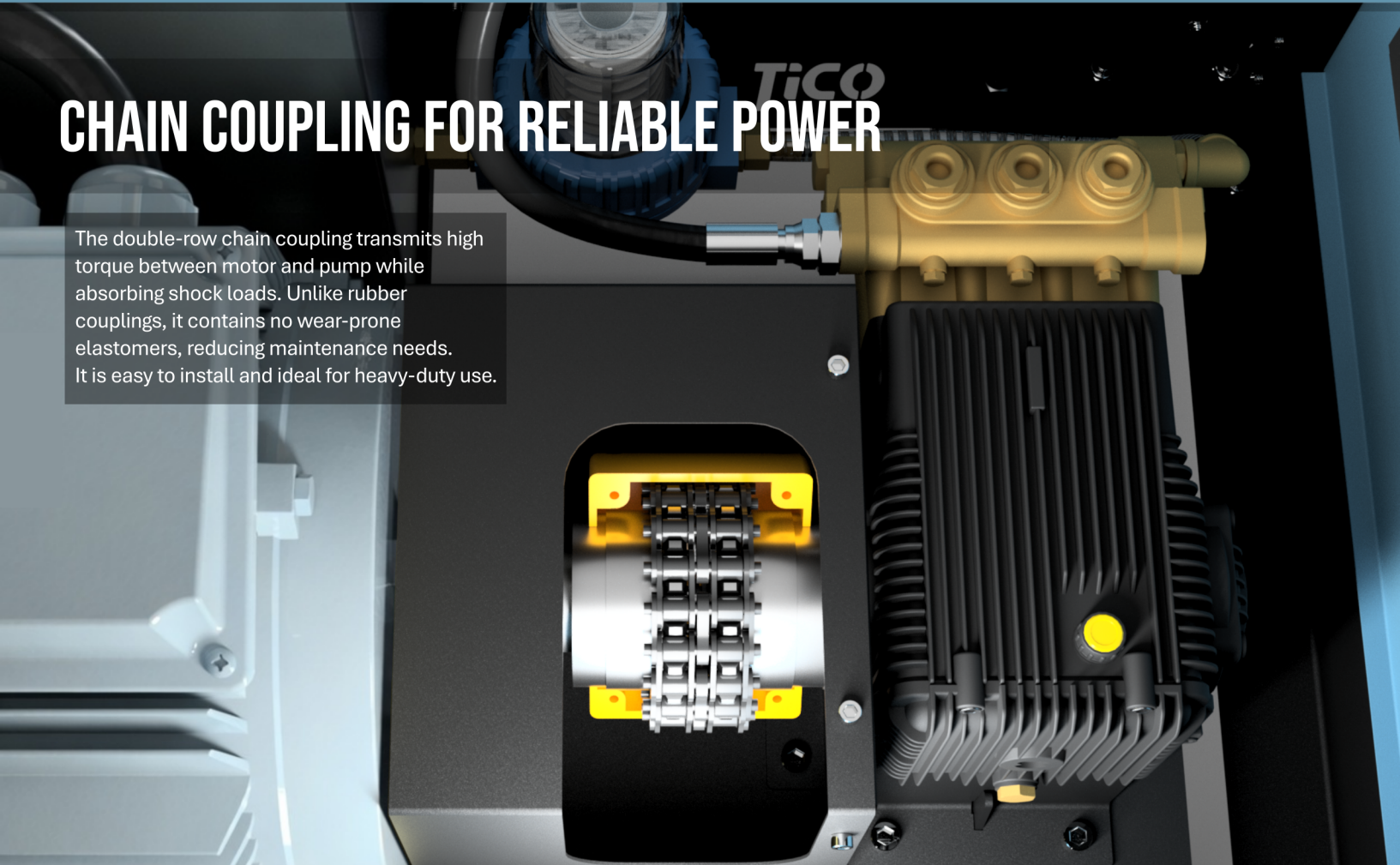


# EASY SERVICE ACCESS WITH MODULAR SIDE PANELS



The modular, easily removable side panels provide maximum accessibility during service and maintenance operations. This design allows rapid and safe access to all critical components of the machine, ensuring more efficient and comfortable service procedures.

# CHAIN COUPLING FOR RELIABLE POWER



The double-row chain coupling transmits high torque between motor and pump while absorbing shock loads. Unlike rubber couplings, it contains no wear-prone elastomers, reducing maintenance needs. It is easy to install and ideal for heavy-duty use.



# COLD WATER HIGH PRESSURE WASHER TECHNICAL SPECIFICATIONS

Working Pressure	Adjustable 500 Bar
Water Flow	22 L / min
Motor	22 kW / 30hp / 1450 RPM, IP55, IE3 Efficiency
Pump	500 Bar, 3 Ceramic Pistons, ANNOVI REVERBERI
Pump Safety System	500 Bar, 100 L / min TECOMEC VHP51 ByPass - Unloader Valve
Voltage & Frequency	380 V - 50 Hz / 440 V - 60 Hz
Dimensions	135 cm x 75 cm x 90 cm
Weight	350 Kg
Spray Gun	60 L / min, 500 Bar, Trigger, TECOMEC ML510 1 m Lance and Turbo Rotary Nozzle
Hose	20 m, 500 Bar, Super Flexible Water Jet Hose
Frame	Laser-Cut, Bent, Powder Coated, Weld-Free Steel Plate 4 mm Frame, 1.5 mm Covers, 8 mm Isolated Base Equipped with Lifting Points at Four Corners
Water Tank	40 L, Leak-Proof Welded, 2 mm Stainless Steel
Electrical Panel	IP67, ABS, Isolated from Control Panel, Internal mount
Electrical System	Automatic Shut-Off System in Case of Failure Star-Delta Panel System: -Schneider TeSys Deca Contactors and Thermal Overload Relay -SIEMENS Circuit Breaker -Phase Control
Control Panel	24V AC, Low Voltage, Isolated from Electrical Panel Schneider Control Components



Contact Us

+90 537 983 73 13 - +90 543 123 73 98

[info@ticomakine.com](mailto:info@ticomakine.com)